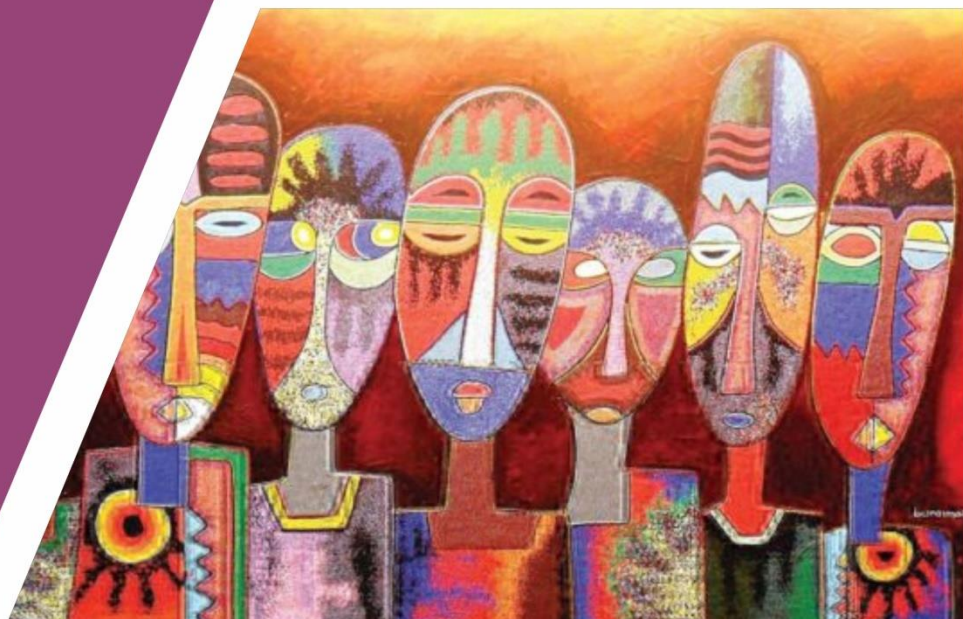


NATIONAL OPEN UNIVERSITY OF NIGERIA

ECE 311



Introduction to Cultural and
Creative Arts
Course Guide

ECE 311 Introduction to Cultural and Creative Arts Course Guide

Course Developer /Writer

Dr. Sweet Ufumwen Ebeigbe, University of Benin, Benin

Programme Leader

Dr. L. A. Lawani, National Open University of Nigeria

Course Coordinator

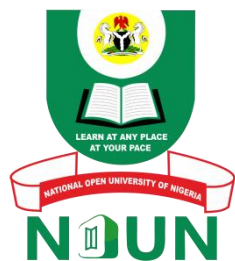
Dr. D.O. Ufoha, National Open University of Nigeria

Course Editor

Dr B. A. Sawa, Ahmadu Bello University, Zaria

Credits of cover-photo: Henry Ude, National Open University of Nigeria

National Open University of - University Village, 91 Cadastral Zone, Nnamdi Azikiwe Express Way, Jabi Abuja, Nigeria



www.nou.edu.ng centralinfo@nou.edu.ng

oer.nou.edu.ng oerunit@nou.edu.ng OER repository

Published in 2021, by the National Open University of Nigeria

© National Open University of Nigeria 2021



This publication is made available in Open Access under the [Attribution-ShareAlike4.0 \(CC-BY-SA 4.0\) license](https://creativecommons.org/licenses/by-sa/4.0/). By using the content of this publication, the users accept to be bound by the terms of use of the Open Educational Resources repository oer.nou.edu.ng of the National Open University of Nigeria.

The designations employed and the presentation of material throughout this publication do not imply the expression of any opinion whatsoever on the part of National Open University of Nigeria concerning the legal status of any country, territory, city or area or of its authorities, or concerning the delimitation of its frontiers or boundaries. The ideas and opinions expressed in this publication are those of the authors; they are not necessarily those of National Open University of Nigeria and do not commit the organization.

How to re-use and attribute this content

Under this license, any user of this textbook or the textbook contents herein must provide proper attribution as follows: “First produced by the National Open University of Nigeria” and include the NOUN Logo and the cover of the publication. The repository has a version of the course available in ODT-format for re-use.

If you use this course material as a bibliographic reference, then you should cite it as follows: “ECE 311: Introduction to Cultural and Creative Arts, Module 0, National Open University of Nigeria, 2015 at oer.nou.edu.ng

If you redistribute this textbook in a print format, in whole or part, then you must include the information in this section and give on every physical page the following attribution: Downloaded for free as an Open Educational Resource at oer.nou.edu.ng If you electronically redistribute part of this textbook, in whole or part, then you must retain in every digital file (including but not limited to EPUB, PDF, ODT and HTML) the following attribution:

Downloaded for free from the National Open University of Nigeria (NOUN) Open Educational Resources repository at oer.nou.edu.ng

Introduction

This course, ECE 311: Introduction to Cultural and Creative Arts is a two-credit course for Graduate Programme in Art. The course will consist of fifteen (15) units of three (3) modules. Module 1 consists of four (4) units, Module 2 consists of five (5) units and Module 3 consists of six (6) units. The material has been developed to suit graduate students in Art at the National Open University of Nigeria (NOUN). It focuses on the key areas of cultural and creative arts.

The course is designed to cater for diverse academic and creative interest of students and prepare them for various professional and administrative job opportunities. After a successful completion of the course, the learner would, definitely be equipped with a thorough knowledge of the arts. Such knowledge will enable the learner, on graduating, to serve his or her country, humanity in general as a practitioner and teacher of art in the public services and private sectors.

The purpose of this course guide is to tell you, in brief, what the course entails, what course materials you will be utilizing and how you can work your way through these materials. It proffers some general instructions on the duration of time you are expected to expend on each unit of the course to enable you conclude without any problem. Additionally, it provides you with the necessary assistance on your tutor-marked assignments. The separate assignment file which will be presented in due course contains detailed information on tutor-marked assignments.

What you will Learn in this Course

In this course, you will be introduced to culture and the creative arts in general, and the involvement of Nigeria in both areas. As you embark on the course, you will learn about some important aspects of culture, and the study, practice and teaching of the creative arts in general and Nigeria in particular.

Course Aim

The course aims at giving you an understanding of the cultures and customs in the Nigerian society and the study and practice of creative arts and their teaching in schools, in addition to giving you an insight into their role and interactions with the Society.

Course Objectives

The course is designed to acquaint you with a proper grasp of culture and the creative arts. It brings forth, in perspective, the Nigerian angle. The course, therefore, highlights key aspects and topics essential in the study of culture and the creative arts. The desired goal is to produce graduates of art (cultural and creative) equipped with the right tools of the profession.

In order to accomplish the objectives listed above, the course sets overall goals. Additionally each unit also has definite objectives. At the beginning of each unit; you will find the objectives of that unit which you must read before you start working through the

unit. You may need to refer to them during your study of the unit to confirm that you understood what you have read and to check if you are making adequate progress.

You should always take a second look at the unit objectives after completing each one. By so doing, you can ascertain that you have achieved what is required of you by the unit. Below are the overall objectives of the course. By accomplishing these objectives, you should have achieved the overall aims of the course. On successful completion of the course, you should be able to:

- define the term “culture” lucidly in your own words, identify concepts associated with culture, describe the characteristics of culture, as well as, its various categories
- name the ethnic nomenclatures in Nigeria; discuss the historical background and the economic, social, political and religious life of the people in some major cultures in Nigeria
- explain the role of language in cultural formation and transmission
- discuss the concepts of family and marriage, differentiate between the two, and describe the different types of families that exist and the status and role of each actor in the family tree
- define art (creative), distinguish between the various branches of art, enumerate and discuss the elements and principles of art, understand basic knowledge of the processes, tools and materials used in the fine and applied arts
- discuss the major functions of art in the society
- explain the nature, types and functions of the performing arts (with emphasis on drama, music and dance) as they exist in the world generally and in Nigeria in particular
- define and discuss art education and its types in Nigeria, give a brief historical background of art education in Nigeria, explain the importance and role of art in general education, acquire some useful tips for the effective teaching of art in school, as well as identify and understand the various artistic developmental stages in children
- state what art history means and entails, discuss the evolution of Nigerian art (from the traditional to modern), and discuss the nature of Nigerian traditional and contemporary arts, in addition to knowing the pioneers and some exponents of these art traditions in Nigeria
- state what craft is, identify some types practiced locally and the cultures or places renowned for or associated with the practice of these handicrafts
- define architecture and state its different types and their functions in Nigeria.

Working through the Course

To complete this course, you are required to read the study units, read set textbooks and read other materials provided by the National Open University of Nigeria (NOUN).

You will also need to visit art workshops and studios to get first-hand knowledge of how artists in the various areas of the visual arts engage in art making. Also, you would need to make use of libraries in tertiary institutions that offer art courses, attend workshops, seminars and conferences on art, participate in art exhibitions and competitions (if possible), and more importantly, practice art at every available time. You should also attend live musical and dance performances when available, and watch same in electronic media if live performances are unavailable.

Each unit consists of self-assessment exercises, and at specific points during the course, you will be expected to tender your assignments. There will also be a final examination at the end of the course. You will require approximately seventeen (17) weeks to complete this course. The components of the course are enumerated below, in addition to what you must do and how you should manage and allocate your time to each unit so as to ensure that you complete the course successfully and on schedule.

Course Materials

Major components of the course are:

- Course Guide
- Study Units
- Textbooks
- TMA Assignment file and
- Presentation Schedule.

Study Units

The study units in this course are as follows:

Module 1 Culture: A Way of Life

Unit 1 Introduction to Culture

Unit 2 The Cultures of the Nigerian People

Unit 3 Language as a Tool for Culture

Unit 4 The Family as a Cultural Unit

Module 2 Art as an Aspect of Culture

Unit 1 Introduction to Creative Arts

Unit 2 Introduction to Fine Art

Unit 3 Introduction to Applied Arts

Unit 4 Introduction to Design

Unit 5 Introduction to the Performing Arts

Module 3 Art in Nigeria

Unit 1 Art History

Unit 2 Art Education in Nigeria

Unit 3 Local Crafts in Nigeria

Unit 4 Nigerian Architecture

Unit 5 Child care in Nigeria

Unit 6 African Arts

Assignment File

In this course, you will find all the details of the work you must submit to your tutor for marking. The marks you obtain for these assignments will count towards the final mark you

obtain for this course. Further information on assignments will be found in the assignment file itself and later in the section on assessment in this course guide. There are 13 tutor marked assignments in this course; the student should attempt all of them.

Presentation Schedule

The presentation schedule included in your course materials gives you the important dates for the year for the completion of tutor marked assignments (TMAs) and attending tutorials. Remember, you are required to submit all your assignments by the due date. You should guard against falling behind in your work.

Assessments

There are two aspects to the assessment of the course: the first are the tutor-marked assignments; and second is a written examination. In tackling the assignments, you are expected to apply information, knowledge and techniques gathered during the course. The assignments must be submitted to your tutor for formal assessment in accordance with the deadlines stated in the **Presentation Schedule** and the **Assignment File**. The work you submit to your tutor will count for 30 percent of your total course mark.

At the end of the course, you will need to sit for a final written examination of 'three hours' duration. This examination will also count for 70 percent of your total course mark.

Tutor-Marked Assignment (TMA)

There are fifteen tutor-marked assignments in this course and you are advised to attempt all. Aside from the course material provided, you are advised to read and research widely using other references which will give you a broader viewpoint and may provide a deeper understanding of the subject.

Ensure all completed assignments are submitted on schedule before set deadlines. If for any reason, you cannot complete your work on time, contact your tutor before the assignment is due to discuss the possibility of an extension which may be granted only in exceptional cases after the due date.

Final Examination and Grading

The final examination for this course will be of three hours' duration and has a value of 50% of the total course grade. All areas of the course will be assessed and the examination will consist of questions, which reflect the type of self-testing, practice exercises and tutor-marked problems you have previously come across. All areas of the course will be assessed.

Utilize the time between the conclusion of the last study unit and time scheduled for the examination to revise the entire course. You may find it useful to review your self-assessment, tutor-marked assignments and comments on them before the examination.

The work you submit will count for 50% of your total course mark. At the end of the course, you will be required to take a final examination, which will also count for 50% of your total mark. The table below shows a breakdown of the actual course marking.

Table 1: Course Marking Scheme

| ASSESSMENT | MARKS |
|-------------------|--|
| Assignment 27TMAs | 6 assignments, best 5 will be used for C.A. = $10 \times 5 = 50\%$ |
| Final Examination | 50% of overall course marks |
| Total | 100% of course marks |
| | |

Study Plan

This table brings together the units and the number of weeks you should take to complete them and the assignments that follow them.

How to Get the Most from this Course

In distance learning, the study units are specially developed and designed to replace the university lecturer. Hence, you can work through these materials at your own pace, and at a time and place that suit you best. Visualize it as reading the lecture instead of listening to a lecturer.

Each of the study unit follows a common format. The first item is an introduction to the subject matter of the unit, and how a particular unit is integrated with the other units, and the course as a whole. Next is a set of learning objectives. These objectives let you know what you should be able to do by the time you complete the unit. You should use these objectives to guide your study. When you have finished the unit, you must go back and check whether you have achieved the objectives. If you make a habit of doing this, you will significantly improve your chances of passing the course.

The main body of the unit guides you through the required reading from other sources. This will usually be either from your set books or from a **Reading Section**.

Activities are interspersed throughout the units. Working through these tests will help you to achieve the objectives of the units and prepare you for the assignments and the examinations. You should do each activity as you come to it in the study unit.

The following is a practical strategy for working through the course. If you run into any trouble, telephone your facilitator or post the questions on the Web CT OLE's discussion board. Remember that your facilitator's job is to help you. When you need help, don't hesitate to call and ask your tutor to provide it. In summary,

Read this course guide

Organize a study schedule. Refer to the course overview for more details. Note the time you are expected to spend on each unit and how the assignments relate to the unit. Important information e.g. details of your tutorials, and the date of the first day of the semester is available from the Web CT OLE. You need to put the pieces of information in

one place, such as your diary or a wall calendar. Whatever method you decide to use, make up your mind and write in your own dates for working on each unit.

Once you have created your own study schedule, do everything you can to stick to it. The major reason why students fail is that they lag behind with their coursework. If you get into difficulties with your schedule, please let your facilitator know before it is too late for help. Turn to unit I and read the introduction and the objectives for the unit. Assemble the study materials. Information about what you need for a unit is given in the 'Overview' at the beginning of each unit. You will always need both the study unit you are working on and one of your set books, at the same time.

Work through the unit. The content of the unit itself has been arranged to provide a sequence for you to follow. As you work through this unit, you will be instructed to read sections from your set books or other articles. Use the unit to guide your reading. Keep an eye on the Web CT OLE. Up-to-date course information will be continuously posted there.

Well before the relevant due dates (about 4 weeks before the dates) access the Assignment file on the Web CT OLE and download your next required assignment. Keep in mind that you will learn a lot by doing the assignments carefully. They have been designed to help you meet the objectives of the course and, therefore, will help you pass the examination. Submit all assignments not later than the due dates.

Review the objectives for each study unit, confirm that you have achieved them. If you feel unsure about any of the objectives, review the study material or consult your tutor.

When you are confident that you have achieved a unit's objectives, you can then start on the next unit. Proceed unit by unit through the course and try to pace your study so that you keep yourself on schedule.

When you have submitted an assignment to your tutor for marking, do not wait for its return before starting on the next unit. Keep to your schedule. When the assignment is returned, pay particular attention to your facilitator's comments. Consult your tutor as soon as possible if you have any questions or problems.

After completing the last unit, review the course and prepare yourself for the final examination. Check that you have achieved the unit objectives and the course objectives.

Tutors and Tutorials

There are 13 hours of tutorials provided in support of this course. You will be notified of the dates, times and location of these tutorials, together with the names and phone number of your tutor, as soon as you are allocated a tutorial group.

Your tutor will mark and comment on your assignments, keep a close watch on your progress and on any difficulties you might encounter as they would provide assistance to you during the course. You must mail your tutor-marked assignments to your tutor well before the due date (at least two working days are required). They will be marked by your tutor and returned to you as soon as possible. Do not hesitate to contact your tutor by telephone, e-mail, or discussion board if you need help. The following might be circumstances in which you would find help necessary.

You do not understand any part of the study units or the assigned readings.
You have difficulty with the self-assessment or exercises.

You have a question or problem with an assignment, with your tutor's comment on an assignment or with the grading of an assignment.

You should try your possible best to attend the tutorials. This is the only chance to have face-to-face contact with your tutor and to ask questions which are answered instantly.

You can raise any problem encountered in the course of your study. To gain the maximum benefit from course tutorials, prepare a question list before attending them. You will learn a lot from participations in discussions.

Summary

ECE 311: Introduction to Cultural and Creative Arts exposes the graduate student to the culture and arts of the Nigerian Society. Upon completing the course, you will be equipped with the knowledge required to be an efficient and effective art practitioner, teacher or educator. You will be able to know more about the cultures and people of Nigeria, their cultural practices, as well as answer these questions.

What culture or art is and how to appraise each?

How best to practice and teach art in Nigeria?

How best to contribute to the field of study within the society?